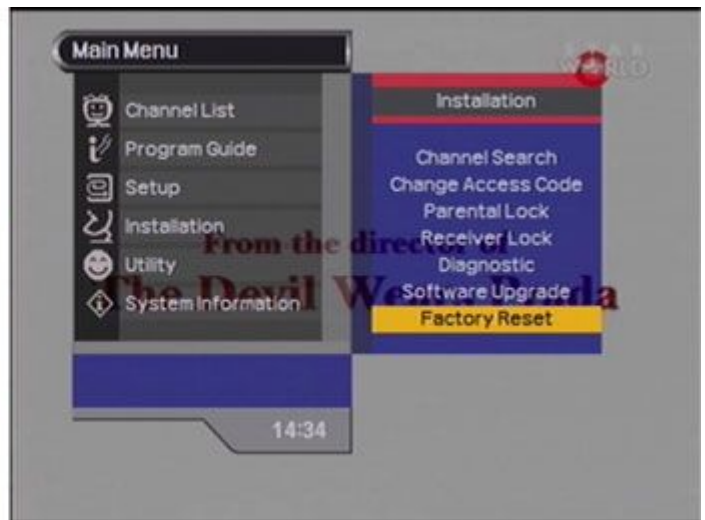


DIGIT-ALL-WORLD (DAW) DAW-Mini 4400/5400

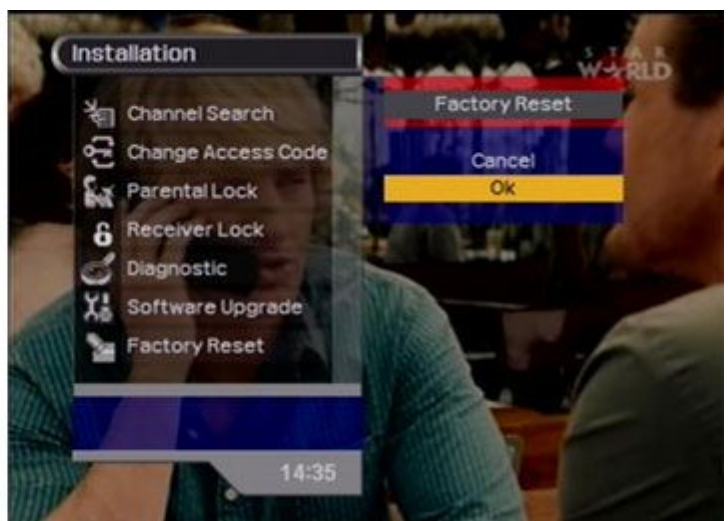


Upgrade Procedure

1. Press "menu" button on remote control and select "installation"
2. Go to "factory reset" and press "ok".



3. Enter "access code", default is "1234".
4. Select and press "ok", wait for the Philippine Multi-Media System, Inc. Logo.

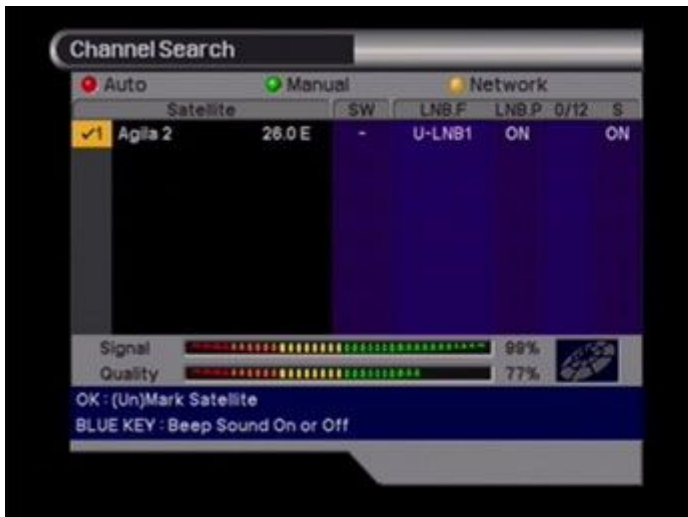


5. The "first installation" prompt will appear, press "ok".
6. Under "equipment" menu, select "none" and press "ok"



7. Under "channel search menu", select "manual" by pressing "green button" on the remote control.

8. Select "Add TP" by pressing the "blue button" on the remote control.



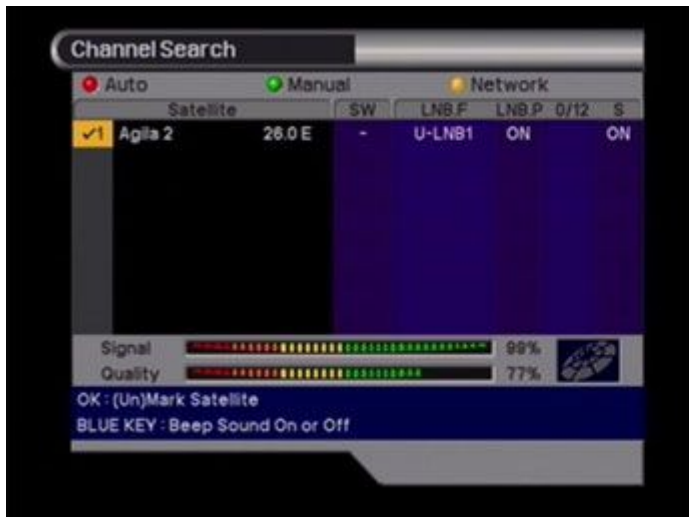
9. Select row of added TP (with check) and go to "freq" column, press "ok" to edit frequency.

10. Enter new frequency "12390" and press "ok".



11. Go to "S/R" column, press "ok" to edit symbol rate. Enter symbol rate "25600" and press "ok".

12. Go to "pol" column, press "ok" to edit polarity to "v" (vertical).



13.Repeat steps 8-12 but enter the frequency "12430" in step 10.

14.Repeat steps 8-12 but enter the frequency "12470" in step 10.



15.Press "exit" on remote. Select "network" by pressing "yellow button" on the remote control.

16.Unit will perform "channel scan", after completion press "exit".



17.A "warning" prompt will appear, press "ok" to save.

18. Press "exit" to view channels.

